

PROJECT NAME: EMINENCE 24

Eminence 24, Nr. Kensville Golf Club Academy, Bh.rajpath Club



Property Type:	Flat/Appartment
Builder Name:	Arista Buildcon
Locality:	Bodakdev
City:	Ahmedabad
State:	Gujarat
Availability:	Immediate
Project Type:	Completed
Sample House Ready:	No

Rera ID: PR/GJ/AHMEDABAD/AHMADABAD CITY/AUDA/RAA00009/230817

Description: Luxurious 4 & 5 B H K Apartments

Architect Name: H M ARCHITECTS Structure Consultant: UMANG J. PATEL

Property Facilities: Air Conditioner Kitchen Door Bell Wash Room Video Doorphone Vastu Compliant

Building Amenities: CCTV Camera Garden Fire Safety
Visitor Parking WIFI Lift
Gym Intercom Power Backup
Security Piped Gas Club House
House Keeping Borewell Kid's Play Area
Games Room Waste Disposal Vastu Compliant
Boom Barrier Entrance Foyer

Specification:

Structure :	Quality controlled earthquake resistant and RCC frame structure over stilts and basement. Elevation is so sturdy and high that all you receive is a positive vibe raising your senses when you enter your humble abode.
Interior Walls :	Single coat plastered interior walls with POP punning.
Flooring :	The flooring is made to floor you and your guests with supreme quality Italian marble or equipment vitrified tiles in the drawing, kitchen, dining and family area. All the bedrooms, balconies and utility areas are also designed with premium quality vitrified tiles.
Electrical :	3 phase concealed ISI wiring with adequate number of points in all the bedrooms to ensure your comfort and ease. All the boards have modular switches. To give you easy accessibility, we have installed telephone points in all the bedrooms and hall. We know how much you love your TV, so we have TV points in all the bedrooms. Connectivity is everything in today's day and age, and to give you that edge we have cable points for internet access in every room.
Sanitary Ware :	All the bathrooms are fully equipped with high-end sanitary ware with 10 years of manufacturer's warranty. The supreme quality brands like Kohler, Toto or homogeneous brands are used for your delightful home.
Elevator :	Magnifying your comfort and luxury we have premium elevator brands Like Kone, Schindler and ThyssenKrupp or homogeneous with complete power back up.
Kitchen :	Exceptional and world class granite or Corian top kitchen platform for your designer kitchen. Premium sink with drain board so your kitchen stays clean and hygienic.
Doors & Windows :	Polymer textured exterior walls adorned with long lasting and flawless finishing. Magnificently embellished and polished veneer main doors with high quality security lock system. Double glazed, powder coated or anodized aluminium windows to have the perfect view you always wanted.
Bathrooms :	To ensure easy maintenance and quality, one of the finest concealed CPVC plumbing lines and suspended drainage lines are installed.
A.c. :	These homes are facilitated with VRV-multi split type air conditioning system adept to maintain individual zone control in each room.
Plumbing :	Pressurized water-supply for all baths with energy efficient supply system.

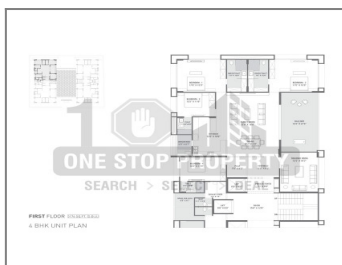
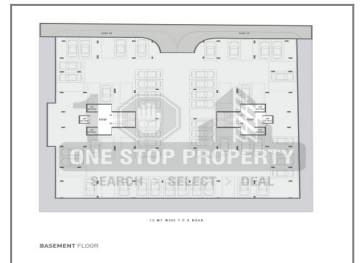
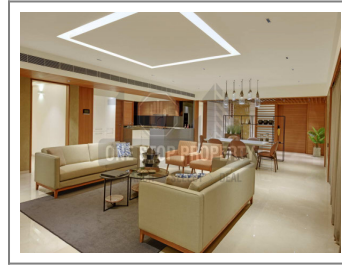
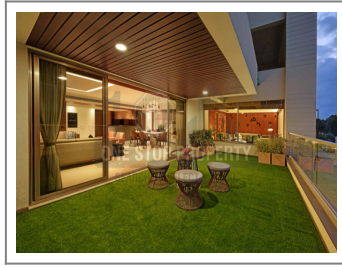
PROJECT DETAILS

Sr. No.	Type	Constructed Area (SBA)	Area Unit
1	4 BHK	4840 Sqft Super Builtup	Sq. Ft.
2	5 BHK	7236 Sqft Super Builtup	Sq. Ft.

- Stamp duty, Registration charges, Legal charges, Auda, Electricity, Corporation, Parking and all other extra charges shall be borne by the purchaser.

- GST, TDS and any other taxes levied in future shall be borne by the purchaser.

PROPERTY PHOTOS



Note : All visuals, images, facilities and other details shown here are for presentation only and are subject to change by the builder/developer/owner without any obligation.

Disclaimer : smartworld.com/ is a online Real Estate platform for Seller and Agent/Broker/Customer/Buyer to facilitate their real estate needs. P MART cannot control any transactions between the Seller and the Agent/Broker/Customer/Buyer. Properties details displayed on the smartworld.com/ website are for informational purposes only. Information regarding real estate projects including property/project details, by various Builder(s)/Developer(s)/Broker(s) who have advertised their property/project. Nothing contained herein shall be deemed to constitute legal advice, solicitations, marketing, offer for sale, invitation to offer, invitation to acquire by the developer/builder or any other entity. P MART shall neither be responsible nor liable to mediate or resolve any disputes or disagreements between the Seller and Agent/Broker/Customer/Buyer. Hereby we strongly advised to visit the relevant RERA website before taking any decision based on the contents displayed on the website.